

PATRICK STAPPERS ARCHITETTO

A|Z APARTMENT

AZ_05

Cliente

Private

Luogo

Florence

Dimensioni

225 sqm.

Cronologia

2005 - 2008

Status

built



This unit has been created as part of an important restoration project of a historic building, located in the heart of the historical center of Florence. A very bright apartment on the top floor, just above the roofs of Florence with a wonderful view from almost every room on the hills of Florence and on the Bardini gardens.

The main idea of the project was to create an elegant and sophisticated apartment with a modern imprint. We focused on the architectural layout, adapting it to the needs of the buyer in compliance with the restoration criteria. The entrance to the apartment is by lift with a private landing. A long corridor overlooking a private courtyard connects the sleeping area with the living area with a guest bedroom at the far end.

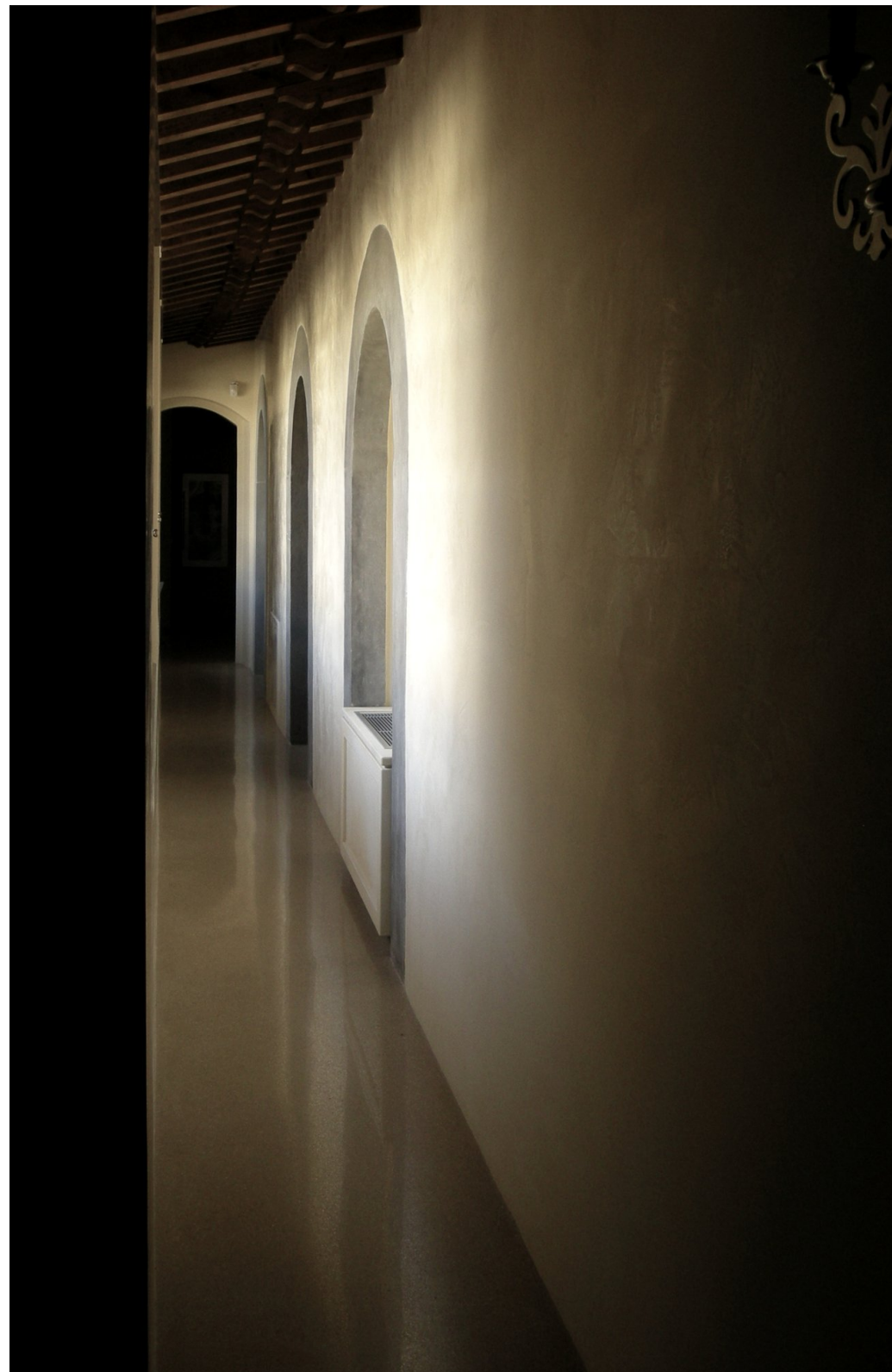
Various rooms revealed ancient decorations to be brought back to light. After a patient discovery, very varied frescoes came to light. It was decided to use two light colors as a base to 'connect' the prestigious decorations inside the apartment, using quality materials typical of noble buildings.

A type of "Venetian terrace" was used for the flooring for all the rooms, characterized by delicate color nuances that give the room an aspect of elegance. While the walls have been finished with "marmorino stucco" for all the walls.

Finally, a basic recessed lighting was studied for the whole apartment.

Upon delivery of the house, the customer decided to import some of the country of origin, bringing furniture and kitchen directly from England.

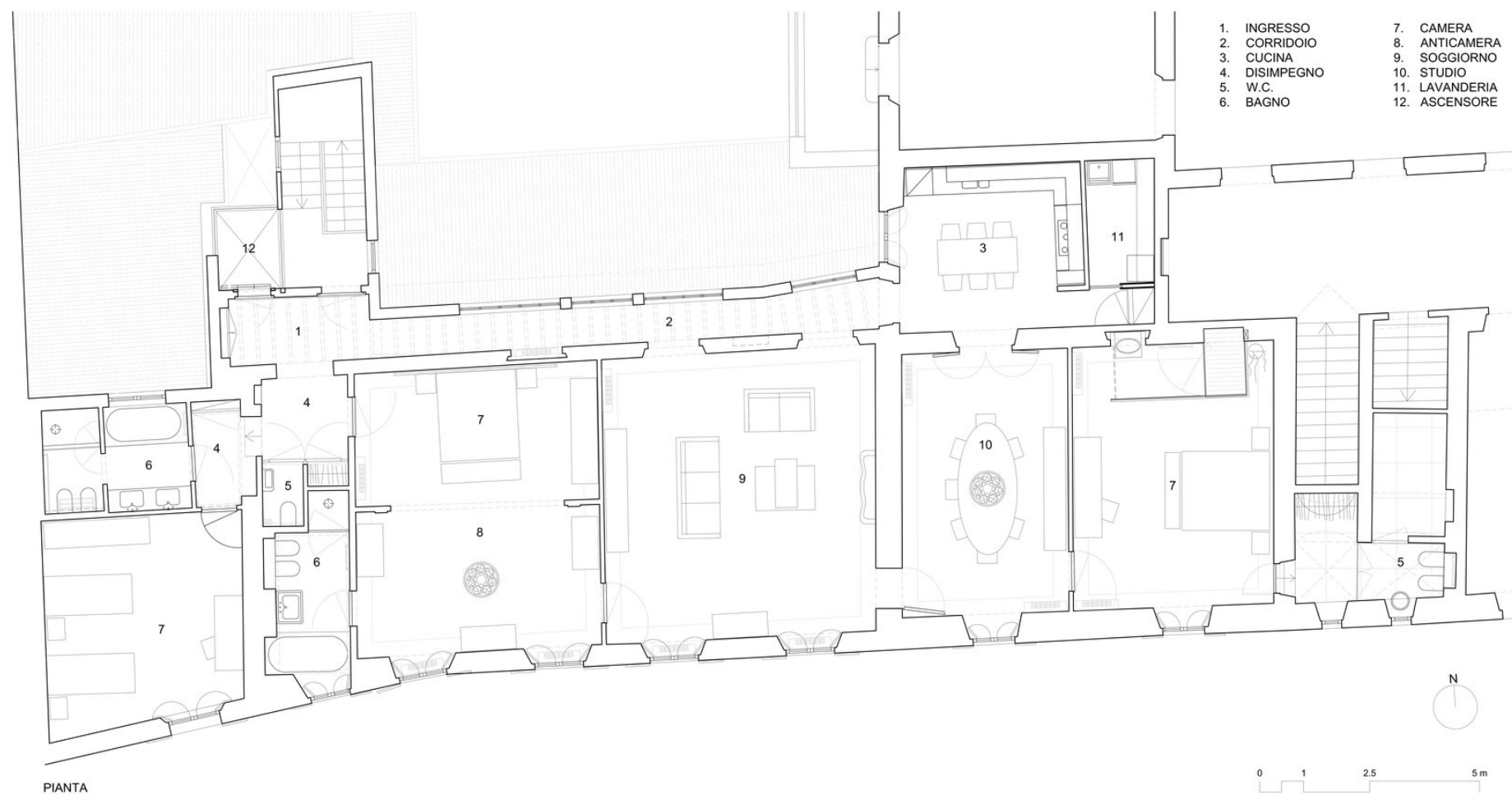


















WWW.PATRICKSTAPPERS.COM