

PATRICK STAPPERS ARCHITETTO

SOCIAL HOUSING COMPETITION

CC_09

Cliente

Fondazione Housing Sociale

Luogo

Milan

Dimensioni

9000 mq.

Cronologia

2009

Status

competition



The proposal provides for a horizontal development of the new buildings, allowing the introduction of an articulated path between them, positioning the various required spaces in the correct sequence.

The green areas occupied by the new buildings are re-proposed in the various accommodations through the insertion of a patio, which has become a characteristic element of the project. Alternating public green (park, square and paths) with semi-public green (courtyards) and private green (patios on various floors) creates a rich and intense environment of views, atmospheres and scents, capable of welcoming the different inhabitants and facilitating meetings.

Speaking of greenery, the "Cascina" could take care of it. As a school for children of all ages where you can learn the basics of gardening, perhaps even helping the community and their inhabitants.

The route starts from the large underground car parks located at the end of the plot from which you go up to the piazza with related areas such as "foyer" and "living". A meeting space that opens towards the sun, the greenery and the future.

The route proceeds passing through the "areas compatible with the residence" with on the background the green of the courtyards, to proceed by flowing under the tallest building, exclamation point, where the physiotherapy centre is located.

From there you can turn right passing through a quiet area destined in part to residential accommodation with easy access or proceed straight on, passing through the "Cascina". The accommodation is designed on a grid following a simple logic. By attributing a green patio to an accommodation, it constrains the construction above that patio and consequently the accommodation above must change the plan. By continuing this system, keeping an eye on privacy and trying to standardize where possible, a rich and varied diversification of housing is created.

The entrances are positioned on the north side by opening the living rooms of the accommodation towards the various positions of the sun during the day. The inhabitants are given an

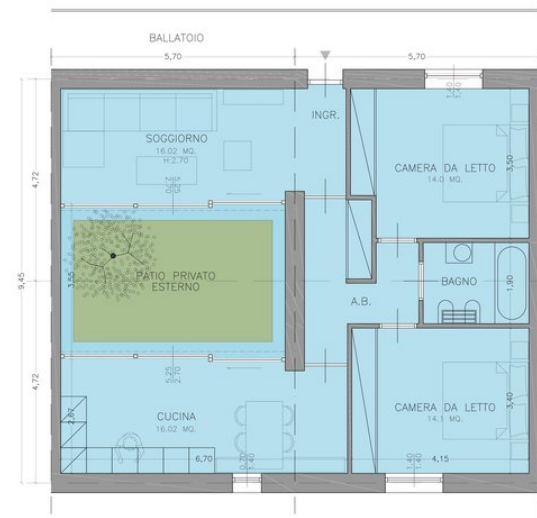


underground parking lot which flows under the two main blocks, ensuring easy and peaceful daily use.

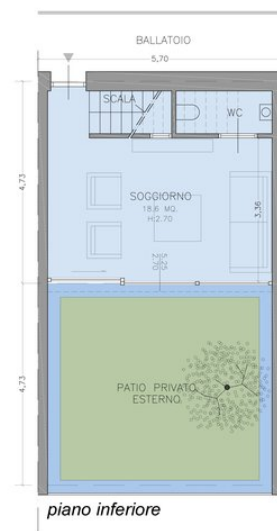
To keep costs low, the project provides for a series of compensation interventions. So some of the houses are kept simple and without patios, the introduction of greenery and the minimal style of the project support the use of relatively poor materials, the insulation system envisaged significantly reduces consumption costs and so on.



PLANIMETRIA TIPOLOGIA A6
SCALE 1:100


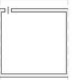






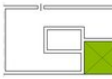
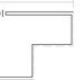







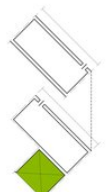









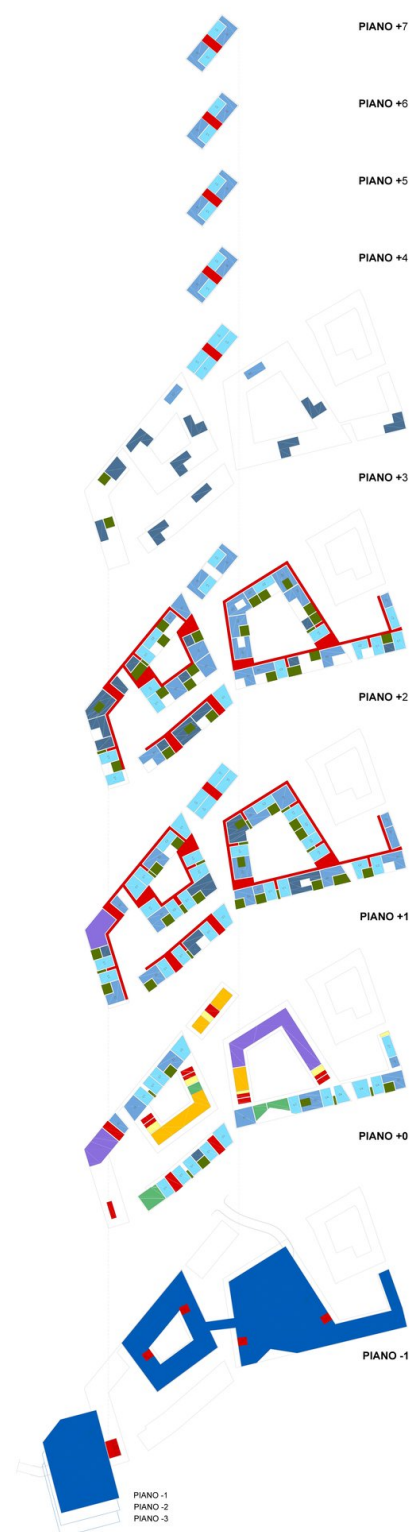
PLANIMETRIA TIPOLOGIA B2
SCALE 1:100



PLANIMETRIE TIPOLOGIA C1, C2
SCALE 1:100

PRINCIPALI SCHEMI PLANIMETRICI

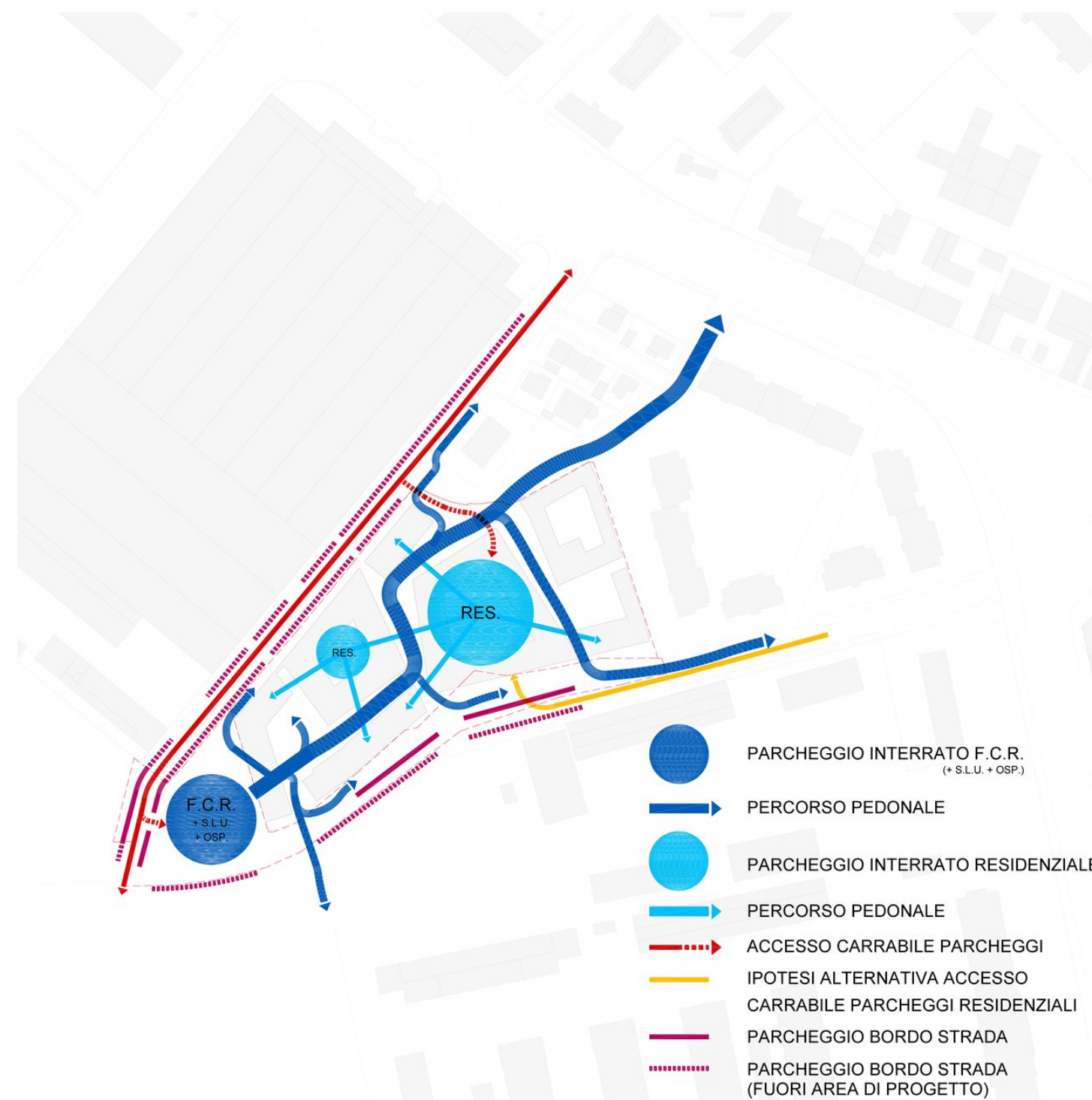
| TIPOLOGIA A SCALA 1:500 | TIPOLOGIA B SCALA 1:500 | TIPOLOGIA C SCALA 1:500 |
|--|---|--|
|  <p>A1 Trilocale con cucina abitabile intorno ad un patio privato</p> |  <p>B1 Bilocale con cucina abitabile</p> | <div><p>C1 Monolocale con spazio cottura</p><p>C2 Bilocale con spazio cottura, ingresso laterale e mini-patio</p><p>C4 Appartamento per persone disabile autosufficiente</p></div> |
|  <p>A2 Quadrilocale su due piani con spazio cottura e patio privato</p> |  <p>B1 Bilocale con cucina abitabile</p> |  <p>C1 Monolocale con spazio cottura</p> |
|  <p>A4 Casa per mamme di giorno con patio privato</p> |  <p>B1 Bilocale con cucina abitabile</p> |  <p>C1 Monolocale con spazio cottura e patio privato sul lato ballatoio</p> |
|  <p>A5 Casa per famiglie solidale con patio privato</p> |  <p>B1 Bilocale su due piani con cucina abitabile</p> |  <p>C2 Bilocale con spazio cottura e patio privato</p> |
|  <p>A5 Casa per famiglie solidale con patio privato</p> |  <p>B1 Bilocale con cucina abitabile e patio privato</p> |  <p>C2 Bilocale con spazio cottura</p> |
|  <p>A5 Casa per famiglie solidale su due piani con patio privato</p> |  <p>B2 Trilocale con spazio cottura e patio privato</p> | <div><p>C2 Bilocale con spazio cottura e patio privato con ingresso laterale</p></div> |
|  <p>A6 Casa per studenti su due piani con patio privato, composto da 4 camere singole, soggiorno, cucina e due servizi * possibilità di avere due ingressi al posto del ripostiglio</p> | <div><p>B2 Trilocale con spazio cottura e patio privato n.b. con possibilità di sostituire una camera doppia con una camera singola per aumentare spazio living / cucina</p></div>  <p>B2 Trilocale su due piani con spazio cottura e patio privato</p> | |
|  <p>A6 Casa per studenti su due piani con patio privato</p> |  <p>B2 Trilocale con spazio cottura e patio privato</p> | |



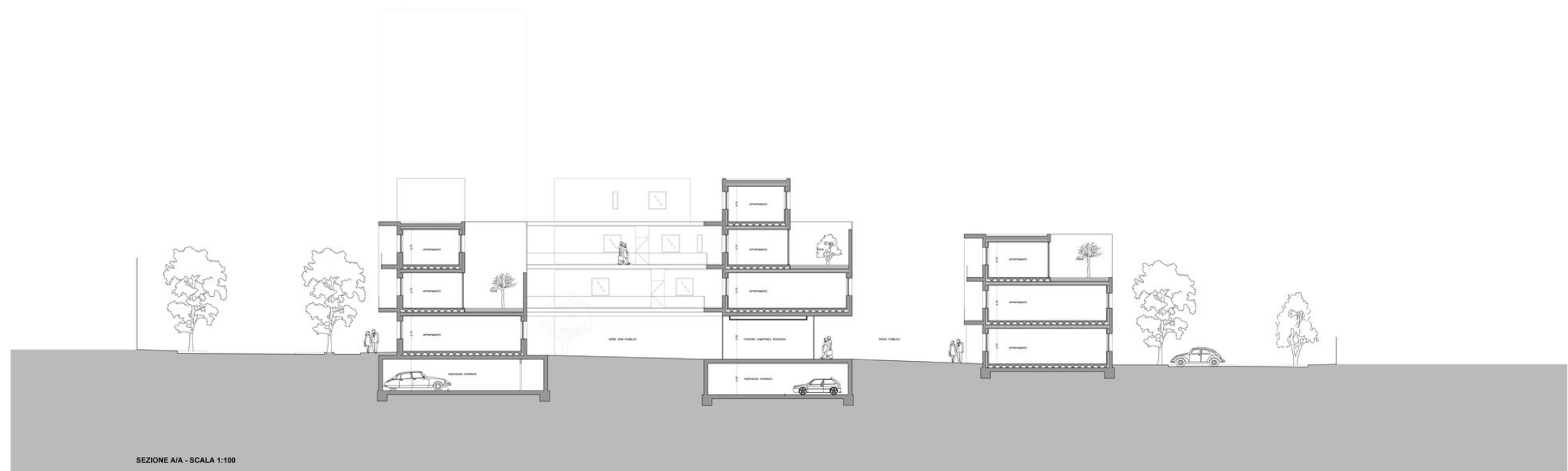




PLANIMETRIA VERDE - SCALA 1:2000



PLANIMETRIA PARCHEGGI - SCALA 1:2000







WWW.PATRICKSTAPPERS.COM